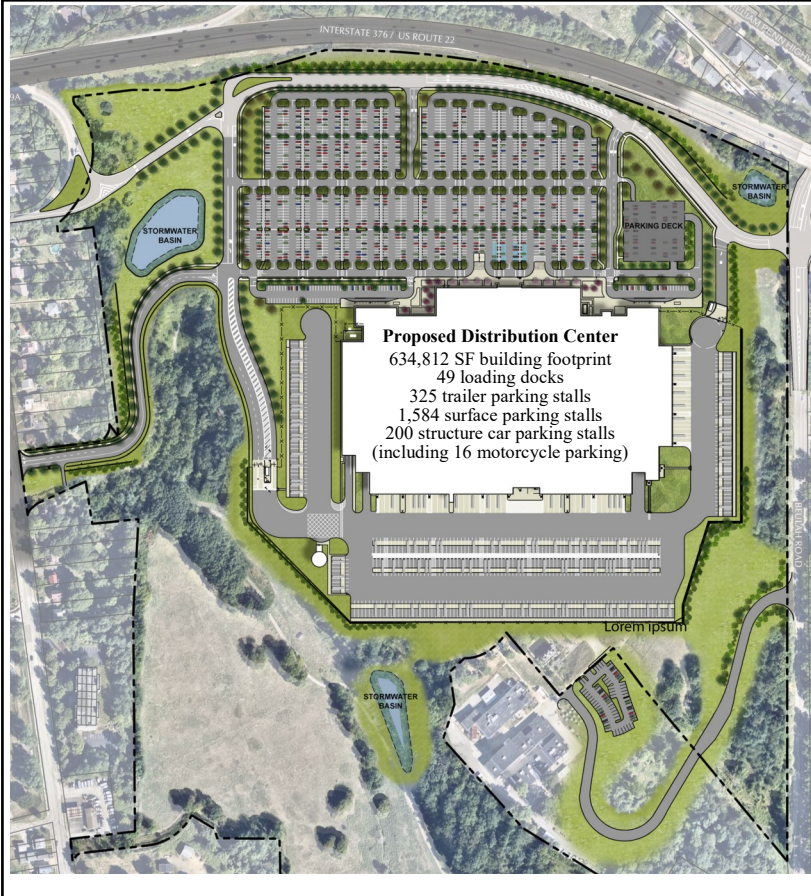




# Churchill Borough Local Government Newsletter

2300 William Penn Highway • Pittsburgh, PA 15235  
Phone: 412-241-7113 • Fax: 412-241-0503 • office@churchillborough.com

October 2021



## Continuation of the Conditional Use Application Public Hearings

### NEXT MEETING:

**Thursday, October 7, 2021, 6 P.M. EST**

For information on future meeting dates and times see [www.churchillborough.com](http://www.churchillborough.com) or call the Borough Administrative Offices at 412-241-7113.

Instructions for attending the meeting by video and/or phone are also available on the website [www.churchillborough.com](http://www.churchillborough.com).

A direct link to the Zoom meeting is provided on the website using this button on the right side of the home page:

[Join Borough Zoom Meeting](#)

Residents and taxpayers who do not have the technical capability to participate in the hearing by video (for example, due to a lack of internet access and/or lack of access to a device capable of transmitting or receiving video), may contact the Borough Manager to request an accommodation to attend the hearing in person at the Borough Building to the extent space permits. It is anticipated that the hearing will require multiple days to complete. Future hearing dates and times will be announced publicly prior to the adjournment of each hearing.

## Update on Potential Westinghouse Property Redevelopment

In December of 2020, Churchill Creek Project, LLC, filed an application for conditional use and land development approval along with related plans and studies seeking to redevelop the vacant George Westinghouse Technology and Research Park into an e-commerce distribution and logistics facility (“Distribution Center”) for use and occupancy by Amazon. The property is located at 1310 Beulah Road, 15235 and is owned by Churchill Crossings Partners, LP (ownership group led by the principals of Carnegie, Pa.-based NAI Pittsburgh). The 133-acre property is located in the C-1 Commercial Zoning District of the Borough.

The proposed Distribution Center would include one large building with a 634,812-square-foot footprint con-

- continued on pg. 3

### - INSIDE -

Potential Westinghouse Redevelopment .....	pg. 1-3	Infrastructure Projects Update .....	pg. 6-7
Churchill and Wilkins Police .....	pg. 2	Wilkins Twp. Bicentennial .....	pg. 7
WHEMS News .....	pg. 2	Borough Tree Committee .....	pg. 8
Letter from the Mayor .....	pg. 3	Churchill Garden Club .....	pg. 9-10
General Election Day News .....	pg. 4-5	Churchill Valley Greenway .....	pg. 11
Churchill Senior Community Plans .....	pg. 6		

## Will Churchill and Wilkins Merge Police Departments?



Did you know that Allegheny County is comprised of 130 individual communities and, of those, 109 have their own police department? In fact, Allegheny County has more individual police agencies than many other STATES!

For some time now, police mergers and regionalization have been the topic of discussion among many boroughs, townships, and municipalities. At its core, the overall primary intent behind regionalization is to provide better and more effective police services to the residents of the communities being served while simultaneously cutting expenditures and costs of these services, subsequently saving taxpayers their hard-earned money. Regionalization also provides opportunities for officers within those agencies to grow, and to either be promoted and/or move into specialized positions so that they may be best utilized by concentrating their efforts in areas of law enforcement to which they gravitate.

Lastly and just as importantly, regionalization creates the perfect environment from which the most professional, highly trained, and effective police agency can emerge. Examples of this can be seen all across the United States including right here, close to home in Pennsylvania; the Northern Regional Police Department in Wexford, which serves Pine Township, Marshall Township, Richland Township and Bradford Woods; and the Southwest Regional Police Department based in Belle Vernon, serving Belle Vernon, Newell, Coal Center, Port Marion and Madison.

Since early this year, Churchill has been engaged in police merger discussions with our neighbor, Wilkins Township. As of June, both communities took strides on this front and indicated their sincere intent on seeing this opportunity come to fruition by actively participating in a regionalization study that is being headed by the Pennsylvania Department of Community and Economic Development (DCED).

In the coming months, results of the study should be made available, at which time the respective elected officials and chiefs of police for each community can begin closely evaluating the data and determining if a merger would in fact work and be in the best interest of all involved. If so, steps can then be taken to further the process and move us that much closer to the creation and implementation of a brand-new law enforcement entity that would serve the residents of both Churchill and Wilkins Township effectively, efficiently and professionally.

*-Submitted by Ronald M. Akerley, Chief of Police*

## Woodland Hills EMS News



Woodland Hills EMS continues to provide emergency medical services to the Boroughs of Braddock Hills, Churchill, Chalfant, Forest Hills, and Wilkins Township. Woodland Hills EMS has participated in summertime activities throughout the area, as well as provided training and education. WHEMS provides CPR training, First Aid and Stop the Bleed for a small fee to cover costs of training supplies and certification cards.

Did you know that over 90% of car seats are improperly installed, fitted, or expired? WHEMS has trained staff members as car seat installers to train parents, family members, and caregivers on how to properly install their car seats, fit the child to the proper seat and choose the best spot to install the car seat in the vehicle.

WHEMS also participates in the Sleep Safe Program. We will provide a crib for any child in need, regardless of income, situation or relation to the child. We have partnered in the Cribs for Kids program, which is a non-profit organization that supplies us with the cribs and education materials for parents and caregivers.

If you are interested in any of these programs, please call Chief Frank Mastandrea at 412-351-9111 or email at [whems340@gmail.com](mailto:whems340@gmail.com).

Remember that school is back in session. Please be mindful of students walking to bus stops and schools. Remember to stop for school buses when they have their flashing **RED** lights on in both directions. Stay stopped until the lights are off, and all students are clear of the streets.

- *Westinghouse continued from pg. 1*

taining approximately 2,919,700 total-square-feet. It will serve as a temporary storage facility for goods and products prior to delivery to another “last mile” distribution facility, from which these products will be delivered to their final destination. The Distribution Center will also include truck terminal facilities as well as ancillary offices and other accessory uses.

The hearing before Borough Council on the conditional use application commenced on July 19, 2021. After the conclusion of the September 20th hearing, the hearing had lasted 10 nights and testimony had been presented for more than 40 hours.

The hearings are being held via remote videoconference and have been averaging a combined 130 participants on Zoom and Facebook Live. In addition, the hearing recordings posted online at YouTube are being viewed approximately 100 times each, in addition to numerous viewings on Facebook.

All project files can be found online via links available on the Borough website, including hundreds of project-related documents (plans, studies and other exhibits). The public is strongly encouraged to check the Borough document storage site frequently to see the new information being shared.

Hearings are expected to continue through October on dates which are to be determined. Subsequent hearing dates and times will be announced prior to the adjournment of each hearing and this information will be posted on the Borough website the following day.

At the conclusion of the Conditional Use hearing, Borough Council will have up to 45 days to issue its written findings and decision. If the conditional use application is approved, Churchill Creek Project will proceed with its land development application which is currently tabled before the Borough’s Planning Commission and which will ultimately come before Borough Council for consideration and possible approval.

## Letter from Mayor Paul Gamrat



The summer months of 2021 are slowly come to an end, and we have wishful thoughts of COVID-19 doing the same. We find ourselves embroiled in debate of masking and vaccinating. The meetings on development in the community continue and we hope for the best in our residential neighborhood. The amount of involvement from the community has been amazing. We are so grateful that people have stepped up with their opinions, questions and concerns. There will literally be no stone unturned. The concerns are under question, and we will be sure that we follow the correct course of action.

Our Police Department and the Chief are dedicated to providing us with a high standard of policing. I have regular communication with the Chief, and he shares our community’s concerns. Speeding and ignoring signage are a major problem. All our roadways are clearly marked. To be sure, there are no roads within the Borough that have a speed limit of 55 or greater. Beulah Road and Greensburg Pike are posted 35 mph. It is dangerous that these are ignored. The department has stepped up its monitoring of this and is targeting aggressive driving.

I have compiled some police statistics, which are also included in my monthly report from the Chief and presented to council and residents.

- On average, our officers log 6,299 miles per month patrolling our streets.
- The Department responds to an average of 807 calls for service per month.
- We have an eight-officer department and our Chief.
- Our officers routinely go above and beyond when responding and interacting with the public.

We have many opportunities for residents to volunteer to work on projects throughout the Borough. Please contact me if you think you would be interested in exploring these opportunities.

## General Election Day is Tuesday, November 2, 2021



The **General Election** is on **Tuesday, November 2, 2021**. Make a plan now for how you will be voting and pay attention to deadlines.

All three polling places in Churchill will be open for this election. Residents who recently moved to Churchill can access their Polling District Location by visiting this website:

<https://www.pavoterservices.pa.gov/Pages/PollingPlaceInfo.aspx>

Residents can apply for an absentee or mail-in ballot by visiting this website:

<https://www.votespa.com> or by calling 1-877-VotesPA (Option 3).

### Here is the line-up for the November 2 General Election:

#### Commonwealth of Pennsylvania

Justice of the Supreme Court (1 position)

Judge of the Superior Court (1 position)

Judge of the Commonwealth Court (2 positions)

#### Allegheny County

Judge of the Court of Common Pleas (10 positions)

Sheriff

#### Churchill Borough

Council Member (4-year term, 4 positions)

Council Member (2-year term, 1 position)

Mayor

Tax Collector

Constable (6-year term)

Election Boards: Judge of Election, Inspector of Election (all 4 Churchill voting districts)

#### Woodland Hills School District

School Director, Region 1

(4-year term, 1 position)

School Director, Region 1

(2-year term, 1 position)

As of this time, mail-in and absentee ballots must be **received by 8 p.m. on Election Day** in order to be counted. **You may NOT drop off a voted ballot at the polling place and have it counted.**

Mail-in and absentee ballots can be dropped off at the Elections Division office (542 Forbes Avenue, 6th Floor, downtown Pittsburgh). The Elections Division is planning to have drop off boxes in the lobby of the building on Election Day. Parking spaces will be marked on Forbes Avenue directly in front of the building for voters to just pull up outside and go into the lobby to drop off their ballot. **Please note: Voters may only drop off their own ballots.**

If you applied for a mail-in or absentee ballot, but would now like to vote in-person, you have two options:

1. Take your ballot, declaration envelope and all other materials received to your polling place. Let the poll workers know that you want to spoil your ballot so that you can vote in-person. You will need to turn over the ballot and materials to the poll workers who will note them as spoiled and place them in an envelope to be returned to Elections. Once done, you will sign in and be processed the same as any other voter.
2. If you did not receive your ballot or cannot find it, you can still go to your polling place, but will have to cast a provisional ballot. Once voted, you will return your provisional ballot to the poll workers who will secure it in an envelope and note the reason that you were asked to cast a provisional ballot. Your vote will not be counted on Election Day but will instead be returned to Elections and reviewed as part of the Return Board process. Once the board verifies that you cast no other vote in this election, the ballot will be opened, counted and added to the overall vote count.

If you are not yet registered, but are an American citizen who will be at least 18 years old by November 2, 2021, you may pick up a **registration form** at the Borough Office or go to [www.votespa.com](http://www.votespa.com). (If you need any forms from the Borough Office, make sure to call first as the Borough Building remains closed due to the ongoing COVID-19 pandemic. **The deadline to register to vote is October 18, 2021**, but don't wait until then; do it NOW!

Anyone who is incapacitated or expects to be out of town on November 2, 2021, can vote by **absentee ballot**. The ballot must be voted, returned, and received (not just postmarked) at the County Election Board by November 2, 2021. Make sure you also get one of these ballots for your "away" college children. They are available at the Churchill Borough Office or the Allegheny County Division of Elections. Start the process early because it involves several steps to complete.

### Important Dates:

**October 18** - Last day to register before the General Election

**October 26** - Last day to apply for a mail-in or civilian absentee ballot

**November 2** - Last day for County Board of Elections to **receive** (not just postmarked) mail-in or absentee ballots

**November 2, 2021 (7 a.m. to 8 p.m.)** GENERAL ELECTION

### Helpful web resources for Churchill residents:

Churchill polling locations:

<https://www.pavoterservices.pa.gov/Pages/PollingPlaceInfo.aspx>

<https://www.votespa.com>

League of Women Voters voting information:

<http://www.lwvpg.org>

<https://www.vote411.org>

Allegheny County sample ballots:

<https://apps.alleghenycounty.us/website/ElectPollPlace.aspx>

### Helpful Phone Numbers:

Allegheny County Elections Division: 412-350-4500

## Halloween Observance Dependent on Local Rise in COVID-19 Cases



At the time this newsletter went to print, the incidence of the more virulent Delta strain of the COVID-19 virus is on the rise. Many citizens who already received their first two vaccine injections are anticipating the opportunity to receive a booster shot. Children under 12 (primary trick-or-treat age) are not yet eligible to receive the COVID-19 vaccine. Given these evolving circumstances, the Borough's guidance about Halloween will be determined and posted on the Borough website at [www.churchillborough.com](http://www.churchillborough.com) in October.

## Mine Subsidence Insurance

Pennsylvania has a long history of coal and clay mining. As a result of this underground mining, millions of structures in Pennsylvania are located over old, abandoned underground coal and clay mines. Mine Subsidence Insurance provides financial compensation for losses caused by the movement of the earth's surface that results from the collapse of underground coal and clay mines in Pennsylvania.

This coverage is offered through the Commonwealth of Pennsylvania's Department of Environmental Protection. Damage due to mine subsidence or mine water breakouts is usually not covered by your homeowner's insurance policy.

For more information, visit <https://www.dep.pa.gov/Citizens/MSI/Pages/default.aspx>.

## Churchill Senior Community Planned for Former Shaffer School Site

On July 12, 2021, Churchill Borough Council granted conditional use approval to TREK Development to redevelop Woodland Hills School District's former Shaffer Primary School (Resolution 4523). The current school sits on 10.5736 acres (or 460,586.60 square feet) in the Residential-3 (R-3) zoning district of the Borough.

TREK Development Group is proposing to demolish the existing Shaffer School at 37 Garden Terrace and construct a private road with duplexes for Senior Housing (ages 62+). There would be 20 duplexes (40 units) with a mix of 30 one-bedroom and 10 two-bedroom units. The units would be single-floor living and provide for easy access from the driveway to the front door. There would be four fully accessible units. Each unit would have a single car garage with enough room to park an extra vehicle in the driveway. The private road would have a sidewalk around the perimeter, which would connect to Garden Terrace. In addition to the sidewalk, there will be another 1,200 feet of walkways on the site. The development will have a community center for exercise, gatherings, senior support services, etc.



*TREK Development Concept Drawing*

TREK Development has applied for receipt of a Low-Income Housing Tax Credit (LIHTC) allocation from the Pennsylvania Housing Finance Authority's (PHFA's) 2021 funding cycle with a set-aside preference for senior occupancy for the Churchill Senior Housing Development. PHFA's long-standing history and mission is to provide affordable homeownership and rental housing to target populations, such as the senior residents of Churchill who will benefit from this development. LIHTC funding awards are expected to be announced in October 2021. If successful, TREK will need about 12 months to close on the financing and 14 months to complete construction. Units would be available for rent in Spring 2024.

TREK Development is a Pittsburgh-based leader in residential and commercial development. Anyone interested in learning more about how they can live in a TREK property should contact TREK Property Management at 412-688-7200.

## Infrastructure Projects Update

The Borough had several infrastructure projects underway and completed this summer. The projects included a road paving program for three roads; lining, cleaning, closed-circuit television inspections and excavations of sanitary sewers; and stormwater sewer repairs. Another sewer project included removal of an existing sanitary sewer pump station located at the eastern end of Collins Road next to the Blackridge Civic Center Park and redirecting the flow via gravity to existing lines in the Municipality of Penn Hills.



### ***Kings Dale Road***

*Jet Jack, Inc. made storm sewer repairs and partial replacement of the existing storm sewer near Kings Dale Road.*

*Work involved installing a new existing 36-inch corrugated plastic pipe storm sewer and new inlet. project was made a priority due to the imminent risks it posed to public safety.*



**Graham Boulevard**

*Soli Construction repaired and relocated the existing storm sewer between Graham Boulevard and Harmain Road. Work included capping and filling the existing storm sewer pipe, and installing new 18-inch, smooth-lined corrugated plastic pipe storm sewer and new inlet. This project was also completed due to imminent risks to public safety and was originally slated for 2020, but delayed due to financial constraints.*



**Paving project**

*Council awarded A. Liberoni, Inc. the contract for the 2021 road paving program, which included Woodland Hills Drive, Jamestown Place, and McCrady Road from Beulah Road to Chapel Hill Road.*

*In these photos, the contractor paved and replaced the base of Woodland Hills Drive.*

**Wilkins Township Bicentennial Celebration!**



Wilkins Township was formed on November 10, 1821 from a subdivision of land in Pitt Township, one of Allegheny County’s seven original townships.

Likewise, Churchill Borough seceded from Wilkins Township on July 27, 1934. Given our shared history, the Wilkins Township Board of Commissioners invites all Churchill residents to join us as we wrap up celebrating our 200th birthday.

**Bicentennial 5K – October 30**

The Bicentennial 5K Committee will host a 5K event beginning at 9 a.m. sharp at the Wilkins Primary STEAM Academy on Churchill Road. The race will take runners through the Penhurst neighborhood of Wilkins Township. Participants will receive a special Wilkins Township Bicentennial shirt and drawstring bag. Prizes will be awarded by age group. Additional details of the 5K race will be available through the Township website, Recreation Advisory Facebook page and Savvy Citizen.

**The Grand Finale—November 13**

*Time Capsule:* We will meet at the Wilkins Township Municipal Building to bury a time capsule and unveil our new bicentennial and VFC #4 dedication plaques. Time to be determined.

*Fireworks:* The Wilkins Township Bicentennial Committee will host a fireworks finale at dusk at Penn Center. We plan to finish our celebration with a BANG!

**Booklet on History of Wilkins for Sale**

Copies of “Wilkins@200,” a bicentennial history of the township, will be on sale at Bicentennial events and through the township office. Cost is \$10.

More details on the events are available on the Wilkins Twp. website [www.wilkinstownship.com](http://www.wilkinstownship.com).

## Borough Tree Canopy Update

The Churchill Borough Tree Committee continued several efforts during the pandemic to enhance our tree canopy, including tree planting, dealing with infestations, and addressing other developments.

### Tree Planting



The tree committee is engaged in a Woodland Hills School District *Climate Initiative* that includes tree planting to address air quality concerns and CO<sub>2</sub> (carbon dioxide) absorption. A survey of all five schools within the district, including the senior high school in Churchill, has been conducted by *Tree Pittsburgh* experts. About 300 trees have been recommended across the five sites, including more than 200 trees to be planted at the senior high school. *Tree Pittsburgh* obtained an Allegheny County Health Department grant as part of their *One Tree Per Child* Program to provide 200 small trees for the district with 180 of them to be planted at the high school.

A tree planting event was held this spring at Wilkins Elementary STEAM Academy where 40 fourth-grade students planted 20 small new trees adjacent to Edgewood Country Club. A Tree Adoption Event was also held at the high school on Earth Day. Nearly 200 small trees were provided for free to teachers, staff and residents of the school district who had registered for the event. Future tree planting and tree adoption events are expected for Fall 2021 and Spring 2022.

Fundraising is underway to obtain 113 landscape trees for all five school sites to add to trees given by *Tree Pittsburgh*. To help this cause, one can donate funds via the Woodland Hills Foundation website, [www.woodlandhillsfoundation.com](http://www.woodlandhillsfoundation.com), and designate “Tree Planting” on the donation page.

Residents have also begun to plant new trees on their properties, and Beulah Presbyterian Church has recently planted more than 400 trees on their property via the Plant Five for Life Program, i.e., plant five trees for every child born in Allegheny County each year.

### Infestation and Dying Trees



**Hemlock woolly adelgid (HWA)** has been found in several places in the borough. HWA is an aphid-like insect that covers itself with a white, waxy “wool” that acts as a protective coating for the insect. Adelgid infestations are easily recognizable by the appearance of tiny cotton balls at the base of hemlock needles. It feeds by sucking sap from trees. A severe outbreak of HWA was recently found on 24 large hemlock trees at the entrance to Bullock Pens Park. If left untreated, HWA would eventually kill the trees. The borough obtained professional help to apply a horticultural spray to eradicate the insect.

**Spotted lanternfly (SLF)** has also been found in Pittsburgh and other nearby municipalities. This highly destructive, invasive insect can threaten hickory, maple, pine, poplar, red oak, walnut, willow, apple and other types of trees. More information can be readily found on the internet. If one finds SLF in Churchill, please report it immediately to the borough office.



Dead trees in public rights-of-way have been recently brought to the attention of the borough office. These situations are being addressed with respective property owners per Borough Code Chapter 286 Trees and Shrubs. A few large street trees are showing decline, e.g., abnormal leaf loss in summer. Root and bark treatments can reverse this decline. Please notify the borough office if help is needed.

The Churchill Tree Committee has been actively engaged in reviewing the proposed e-commerce distribution center and its potential impact on tree canopy at the former research site. For the latest developments on this matter, please refer to the public documents page of the borough website.

*-Submitted by Ken Balkey, Chair, Churchill Borough Tree Committee*



## Churchill Garden Club News



The Churchill Garden Club is an organization that helps to promote horticulture, artistic design, and awareness of the environment. Perhaps you have seen some of us working in the Commons Gardens at the corner of Beulah and Churchill roads. We like to think that gardens look very nice this year for all to enjoy. We also get together on the first Wednesday of the month to pick up litter at the entrances and exits of the Parkway. It is unbelievable the amount of trash we pick up monthly. It would hard to imagine how much would be there if we did not provide this service. We ask everyone to not throw trash out of their cars. Let's help to keep our neighborhood as nice as possible.

The Churchill Garden Club started the new 2021-22 season with our annual soiree. It was well-attended by members, spouses and guests. We have had some challenges finding places and activities that are opened due to COVID-19 but we always try to have a variety of events each year. We are interested in seeing gardens, both private and public. We travel to parks and trails for nature walks and we like to use our creativity in making a craft or floral arrangement. This year, we will provide all this and so much more. If you think you are interested in joining, please get in touch with Eileen Kisloff at [emtkisloff@gmail.com](mailto:emtkisloff@gmail.com).

### Common Gardens



Members of the Churchill Garden Club are hoping that you are enjoying the Common Gardens located at the intersection of Beulah and Churchill roads. Those of you who are familiar have noticed the downsizing to a more manageable site. We have a small group of volunteers who get together every other Saturday to perform maintenance.

Among 11 ornamental trees planted last year, we have a very healthy crop of cleome. There is a variety of marigolds and zinnias, which our members grew from seeds.

There is a beautiful display of canna surrounding our historical marker. If you walk through you will see a colorful display of red, yellow, pink and rainbow Four o'clocks. Sit on one of the two benches and take a rest from your walk.

We welcome anyone who would like to join us in this community effort. No experience necessary. Contact Paul Gamrat at [gamratpaul@gmail.com](mailto:gamratpaul@gmail.com) to help us out.

- continued on pg. 10

- Churchill Garden Club continued from page 9

### Litter Control Along Borough Roadways



The Churchill Garden Club has been participating in the Penn-DOT’s Adopt a Highway program for the past five years. You may have noticed our signs at exits 79A, 79B and at the corner of Beulah and Churchill roads. As participants, we have established a monthly litter pickup date. We meet at 9 a.m. the third Wednesday of each month at the borough building.

We have four specific sites to clean—the Parkway entrance and exit ramps, McCrady Road and parts of Beulah Road. Coverage depends on how many volunteers attend. You don’t have to be a Garden Club member to help. We supply safety vests, grabbers and bags. We have safety cones and signs to announce our presence

and be safe. On average we spend 60-90 minutes per cleanup. We welcome anyone who is interested. Contact Paul Gamrat at [gamratpaul@gmail.com](mailto:gamratpaul@gmail.com).

-Submitted by Mayor Paul Gamrat, President, Churchill Garden Club

### Leaf collection



Leaf pickup dates are on the following Tuesdays: October 12 and 26, November 9 and 23, and December 7. Please place leaves only in paper, biodegradable bags at curb on Monday evening.



Leaves in plastic bags will not be picked up. The leaves are composted and next June the “Black Gold” will be available as a rich fertilizer for your trees and shrubs. If you gather more leaves after the last date of pickup, you will need to make special arrangements with a landscaper or other contractor to have them removed.

### Do you know when to expect your tax bills?

Danielle Weaver is Churchill Borough’s tax collector, appointed by Borough Council to fill the remainder of the term of former tax collector Daniel Duerring, who retired last year.

Three real estate taxes are collected within the Borough of Churchill but each tax has a different collector. The approximate arrival dates of 2022 property tax bills and their collectors are as follows:

Tax	Approx. Arrival of Tax Bill	Collector
Borough	March 2022	TBD; Will be announced in early 2022
School District	July 2022	Danielle Weaver
County	March 2022	John Weinstein, Allegheny County Treasurer

**NOTE: Installment payment due dates for WHSD taxes for the current tax year (2021) are as follows: 1st Installment due Oct. 31, 2021, 2nd Installment due Jan. 31, 2022, 3rd Installment due March 31, 2022.**

Any questions concerning school taxes, please call Danielle Weaver at 412-241-0815.

Any questions concerning borough taxes, please call Keystone Collections at 412-793-7063.

If you refinance or pay off your mortgage, you must let the appropriate tax authorities know. Any address changes must be sent to Allegheny County (412-350-4600) AND Danielle Weaver (412-241-0815). If corrections are not recorded, over payments and missed payments can occur.

If you have general questions regarding any of the information above, please reach out to Danielle Weaver by phone at 412-241-0815 or by e-mail at [dweaver@churchillborough.com](mailto:dweaver@churchillborough.com). For the most up-to-date information on tax due dates and penalties on unpaid taxes, visit [www.churchillborough.com](http://www.churchillborough.com).

## Winter Reminders

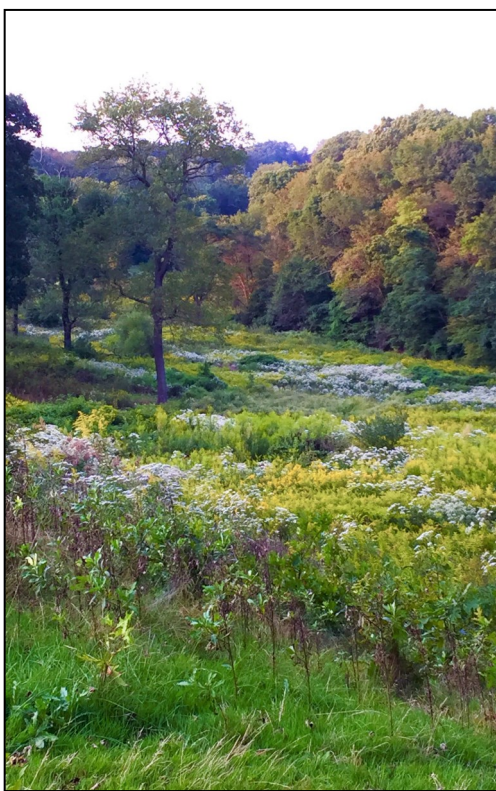
Before you know it the leaves will be gone and the snow will be here. Please keep in mind there is an ordinance regarding snow removal from sidewalks.

Borough Code Chapter 264 Article II “[Snow and Ice Removal](#)” states that snow must be removed within 24 hours after the snow ceases. Furthermore, [Chapter 264 Article III](#) prohibits shoveling snow into the street. Keeping pedestrians and motorists safe is a priority.

Please move your vehicle(s) off borough streets during snow events so that plowing and salting can proceed effectively. Also, check up on elderly or infirm neighbors and notify the Borough Office of any situation that may require medical or safety attention.



## Churchill Valley Greenway Improvements and Stewardship Efforts Underway



After two years of hard work with the communities of Churchill and Penn Hills, we at Allegheny Land Trust (ALT) are proud to announce the permanent protection of the 151-acre Churchill Valley Greenway. The site of the former Churchill Valley Country Club, this new conservation area will serve as a space for passive recreation, environmental education, protected wildlife habitat, preserved scenic beauty, improved air and water quality, and much more. Over the next year, visitors can expect to meet our team, see site improvements, and find volunteer and education events hosted at the green space.

Churchill Valley Greenway is now part of a network of 3,300 acres of ALT-protected green space in the region. We look forward to maintaining, improving, and providing outdoor programming at Churchill Valley Greenway to benefit the health and well-being of current and future generations of Churchill and Penn Hills residents. Visitors may have already noticed that in the weeks since acquiring the property, we have done some preliminary landscaping along Beulah Road to improve visibility and enhance the roadside “curb appeal” of the property. We also cleared brush and overgrown vegetation along both sides of the road, around the pedestrian bridges, and along some of the trails. ALT has opened additional parking on the west side of Beulah Road, repaired one of the foot bridges crossing Chalfant Run, and installed temporary signage. Finally, we’ve already held and scheduled several volunteer and environmental education events on-site.

Supporters can expect to see additional improvements in the coming months, while others will take some time to implement. Timing of major stewardship projects will depend on the availability of additional funding going forward. Also, please note that, for the safety and enjoyment of all Churchill Valley Greenway visitors, it is critical that all visitors know and adhere to the rules and regulations posted on-site.

We hope that you will join us in improving the Churchill Valley Greenway by volunteering your time, making a donation to the maintenance fund, or attending an upcoming event. More information can be found at the links below:

**Learn More:** <https://alleghenylantrust.org/green-space/churchill-valley-greenway>

**Donate:** [alleghenylantrust.org/donate](https://alleghenylantrust.org/donate)

**Attend an Event:** [alleghenylantrust.org/events](https://alleghenylantrust.org/events)

**Volunteer:** [cseiler@alleghenylantrust.org](mailto:cseiler@alleghenylantrust.org)

*-Submitted by Tom Dougherty, Vice President of Development & External Affairs, Allegheny Land Trust*

## Contact the Borough, Keep Informed

Any resident who has questions or concerns about Churchill Borough matters is encouraged to contact Borough Manager Alex Graziani at 412-758-8818 or [alex@churchillborough.com](mailto:alex@churchillborough.com). The Borough Council meets the 1st and 2nd Monday at 7 p.m. unless a holiday falls on those days.

The Borough website is a one-stop source of information about Churchill, such as the Borough Code online, meeting agendas and minutes, past newsletters, community calendar and recreation programs. Visit [www.churchillborough.com](http://www.churchillborough.com).



In an effort to provide more reliable communication to our residents and businesses within the borough, we have implemented Swiftreach to enable us to launch alerts to your home or cell phone. It will be used to communicate Borough information only. If you would like to participate in this program, you can login to the Swiftreach Portal located on the homepage at [www.churchillborough.com](http://www.churchillborough.com). Residents should also login to the Swiftreach website to update their email, phone number, etc. or contact the Borough offices at [office@churchillborough.com](mailto:office@churchillborough.com) or 412-241-7113.

We're on social media:



<https://www.facebook.com/Churchill-Borough-100676791820384>



**YouTube**

[www.youtube.com/user/ChurchillBorough](http://www.youtube.com/user/ChurchillBorough)

**Churchill Borough**  
**2300 William Penn Highway**  
**Pittsburgh, PA 15235**